

FAST FACTS

LOCATION: Scarborough, ME

SQUARE FEET: 255

STYLE: Transitional L-shape

FUN FACT: The yellow and green tile initiated the kitchen's color scheme.





Blending traditional elements, such as the distressed stools and Shaker-style cabinets, with modern features, such as the orblike pendants and sleek cabinetry pulls, gives this kitchen a distinctive eclectic look.

DISTINCTLY DIFFERENT

Bold color and inviting textures infuse this kitchen with winning personality.

writer and field editor SUSAN SALOMON
photographer JAMES SALOMON



This is not your average cookie-cutter kitchen. “It was designed to stand out,”

says Maine designer Margaret Morfit, who, when asked to design a kitchen that was “a little bit unusual,” jumped at the opportunity. “The homeowners wanted a kitchen that felt warm and inviting,” she says, “but also like something they’d never seen before.” Her solution: warm, traditional style layered with bold colors and contemporary elements for a beautiful kitchen with a style all its own.

The kitchen’s colorful look started with playful backsplash tile in a pattern of yellow diamonds and green swirls. For a sunny feel, Morfit painted the lower cabinetry mustard yellow. To keep the bright shade from overpowering the room, she selected a warm off-white tone for the upper cabinets. “There’s no reason all your cabinets need to be the same,” Morfit says, “particularly when you’re using a really bold color.”

While the homeowners favored painted cabinetry over natural wood, they didn’t want the surface to have a flat finish. Morfit added depth to the cabinets—and softened their appearance—with a finish that mimics the look of wood grain. “If you use a solid color, the color seems stronger,” she says. “The finish mutes the tone slightly and gives the cabinetry more personality.”

Also providing character is the textured green marble that tops the cabinetry. “The beautiful marble we chose pulled everything together,” Morfit says. Contemporary hardware complements the kitchen’s stainless-steel appliances, while salvaged antique oak warms the floor and is easy on the feet.

To satisfy the homeowners’ need for a kitchen as functional as it is striking, architects Richard Renner and James Robbins designed the room as part of a semi-open floor plan. The kitchen overlooks the family room, while a separate breakfast area is just around the corner. Anchored by the large island with seating, the kitchen easily accommodates a crowd while preserving the cook’s space. “The kitchen had to have an intimate feel, but also had to work with a large group of people,” Renner says.

ABOVE LEFT: Textured green marble countertops coordinate with the swirls on the backsplash tile.

LEFT: Corner windows flood the space with natural light, and yellow base cabinets add to the room’s sunny disposition. **OPPOSITE:** Neutral wall cabinets with textured glass inserts balance the bright tones of the base cabinetry.







\$
BUDGET TIP
Open shelves, shown here in the pantry, are inexpensive to construct and provide low-cost storage ideal for less formal kitchens.





56

There's no reason all your cabinets need to be the same, particularly when you're using a really bold color. 99

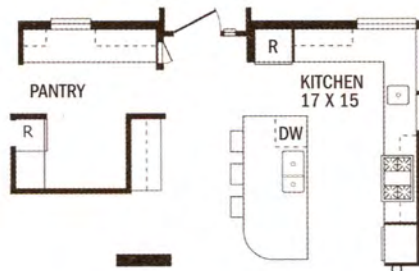
designer MARGARET MORFIT

At the island, a large sink and a dishwasher make a complete cleanup zone, while a prep sink on the perimeter wall provides a work area next to the cooktop. Double wall ovens complete the compact cooking area. The refrigerator is easily accessed from both sides of the island.

A coffee station across from the main work core includes generous prep space and storage for cups and glassware. Around the corner, a pantry packs in plenty of functional storage and includes a second refrigerator. Open shelving in the pantry and textured glass on many of the kitchen's upper cabinets keep things visible.

When it all came together, the homeowners had exactly what they were looking for—an eclectic mix of materials and styles in a kitchen that can host a couple or a crowd. **KBI**

RESOURCES BEGIN ON PAGE 130.



ABOVE LEFT: A shallow cabinet near the exterior door holds mail and is faced with a chalkboard panel.

ABOVE RIGHT: The refrigerator location allows easy access to beverages without entering the work core.

OPPOSITE: A coffee station keeps java drinkers out of the cook's way. When the homeowners entertain, the area easily transforms into a bar.